

LUIGI BOCCHERINI

627015

Op. VI.
(Enrico Polo)

SEI QUARTETTI

per Archi

Prima Serie
Quartetti I. II. III.

QUARTETTO I.

VIOLA

Allegro vivace! $\text{♩} = 138$

mf

p

cres.

f

p

cres.

p

p

f

p dolce

f

p

f

p

pp

morendo

VIOLA



VIOLA

First staff of music in G major, 12/8 time. Dynamics: *f*, *p*, *f*, *p*.

Second staff of music in G major, 12/8 time. Dynamics: *pp*, *morendo*, *ppp*.

Third staff of music in G major, 12/8 time. Tempo: *Adagio* (♩ = 50). Dynamics: *p*, *sf p*, *sf p*, *sf p*.

Fourth staff of music in G major, 12/8 time. Dynamics: *p*, *p*, *p*. Includes *V* (Vibrato) markings.

Fifth staff of music in G major, 12/8 time. Dynamics: *p*, *cres.*, *espress.*, *p*. Includes a sixteenth-note figure with a *6* (sixteenth notes) marking.

Sixth staff of music in G major, 12/8 time. Dynamics: *sf*, *p*, *sf*, *p*.

Seventh staff of music in G major, 12/8 time. Dynamics: *p*, *sf p*, *sf p*, *sf p*, *cres.*

Eighth staff of music in G major, 12/8 time. Dynamics: *f*, *p*, *cres.*, *p*.

Ninth staff of music in G major, 12/8 time. Dynamics: *cres.*, *poco a poco*, *poco*, *f*, *sf p*, *sf p*, *sf p*, *sf p*.

Tenth staff of music in G major, 12/8 time. Dynamics: *p*, *p*, *p*. Includes triplet markings (*3*).

Eleventh staff of music in G major, 12/8 time. Dynamics: *sf*, *sf*, *pp*. Includes a *rit.* (ritardando) marking.

VIOLA

MINUETTO IN RONDO

All.^o = 138
grazioso

dolce

p *mf* *p* *mf* *p*

p *f*

p dolce

p

cres.

p *cres.*

dolce

p *mf* *p* *mf* *p*

p *f*

p

sf *p* *sf* *p* *p*

sf *p* *sf* *p* *cres.* *f*

VIOLA

First musical staff in 2/4 time, key of B-flat major. It begins with a piano (*p*) dynamic and features a melodic line with slurs and a first ending bracket.

Second musical staff, continuing the melodic line from the first staff, marked with a pianissimo (*pp*) dynamic.

Third musical staff, featuring a first ending bracket, a pianissimo (*pp*) dynamic, and a section marked *p dolce* with a *v* (vibrato) marking.

Fourth musical staff, starting with a forte (*f*) dynamic and ending with a piano (*p*) dynamic.

Fifth musical staff, featuring a forte (*f*) dynamic and a *v* (vibrato) marking.

Sixth musical staff, marked *p dolce* and *cres.* (crescendo).

Seventh musical staff, marked *f* and *Tempo I^o* (first tempo), ending with a piano (*p*) dynamic.

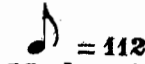
Eighth musical staff, featuring dynamics of *mf* and *p*.

Ninth musical staff, marked *f* and featuring first and second ending brackets.

Tenth musical staff, marked *ff* (fortissimo) and featuring a *tr* (trill) marking.

QUARTETTO II.

VIOLA

 = 112
Moderato



VIOLA

Largo cantabile $\text{♩} = 76$

p *mp* *cres.* *f* *f* *mf* *mf* *p* *f* *f* *p* *f* *p* *f* *mf* *mf* *dim.* *mf*

VIOLA

All.^o $\text{♩} = 88$
con spirito

f

p

sensibile

p

cres. poco a poco

f

fp espress.

mf espress.

f

p

f

f

p

cres.

cres.

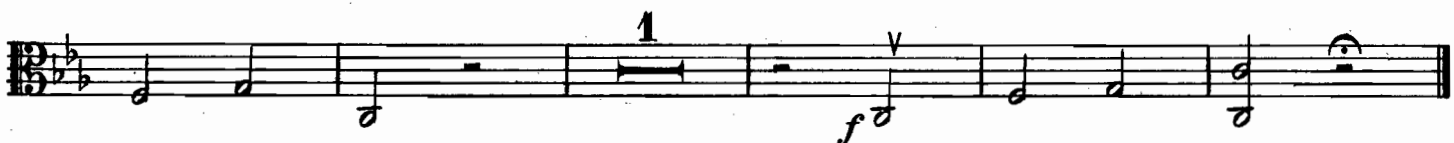
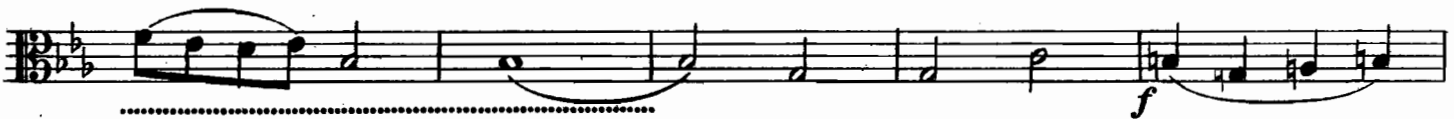
fp

cres.

p

1

VIOLA



QUARTETTO III.

VIOLA

Largo (♩ = 58) *dolce*

p *cres.* *p* *sf* *p* *p* *f* *p* *p* *sfp* *sfp* *cres.* *rit.* *a tempo* *pp* *p* *p* *f* *mf* *espress.* *p*

VIOLA

♩ = 188
Tempo di Minuetto

f *p*

pp *cres.*

f

p *pp* *cres.*

f *pp*

più pp *ff*

p

pp *f* *Fine*

TRIO

p

p

f

pp *p* *pp* *tr* *D.C. il Minuetto al fine*

VIOLA

$\text{♩} = 132$
All^o con brio
ma moderato

The musical score for Viola on page 12 consists of 11 staves of music. The key signature is two flats (B-flat and E-flat), and the time signature is 2/4. The tempo is marked 'All^o con brio ma moderato' with a quarter note equal to 132 beats per minute. The score includes various dynamics: *p* (piano), *f* (forte), *mf* (mezzo-forte), and *cres.* (crescendo). There are also markings for *arco.* and *stacc.* (staccato). First endings are indicated by a '1' above the staff. The music features a mix of eighth and sixteenth notes, often beamed together, and includes some slurs and accents.

VIOLA

First staff of music. Key signature: two flats (B-flat, E-flat). Time signature: 3/4. Starts with a rest, then a quarter note G4, followed by a half note G4. A dynamic marking *p* is below the first note. A fermata is placed over the second measure.

Second staff of music. Continues the melody with eighth and quarter notes. Dynamic markings include *dim.* and *p* *cres.*

Third staff of music. Continues the melody with eighth and quarter notes. Dynamic markings include *f* and *fp*.

Fourth staff of music. Continues the melody with eighth and quarter notes.

Fifth staff of music. Continues the melody with eighth and quarter notes. Dynamic markings include *p* and *cres.*

Sixth staff of music. Continues the melody with eighth and quarter notes. Dynamic markings include *p*, *f*, and *p*.

Seventh staff of music. Continues the melody with eighth and quarter notes. Dynamic markings include *p*, *cres.*, and *p*. A first ending bracket is above the first measure.

Eighth staff of music. Continues the melody with eighth and quarter notes. Dynamic markings include *cres.*, *f*, and *p*.

Ninth staff of music. Continues the melody with eighth and quarter notes. Dynamic marking includes *p*.

Tenth staff of music. Continues the melody with eighth and quarter notes. Dynamic markings include *cres.*, *f*, *p*, *p*, and *f*.

Eleventh staff of music. Continues the melody with eighth and quarter notes. Dynamic marking includes *p*.

Twelfth staff of music. Continues the melody with eighth and quarter notes. Dynamic markings include *f*, *p stacc.*, and *f*.

Thirteenth staff of music. Continues the melody with eighth and quarter notes. Dynamic markings include *p* and *f*.

